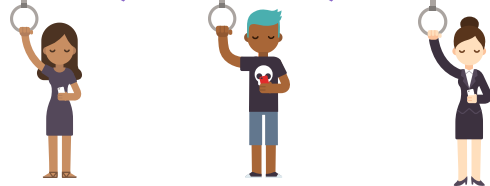


Rail Passenger Transport

Transport, Postal and Warehousing
ANZSIC 4720 Rail Transport

Number of Passenger Trips

10,057,553



was the number of passenger trips by train, bus and ferry within the WA Metropolitan Transperth System in August 2021

Industry Revenue

\$1,3878.3 BN

is the annual revenue. This is expected to grow to \$10.1BN in 2025 to 26 as a result of the expanding national network

Industry Employment

1,387

Train Drivers are employed in WA



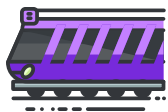
Train Drivers



92% Male

92% of WA Passenger Train Drivers are male. The rail sector has established several strategies to encourage female driver training: Apply now

Number of Businesses



25

is the number of Rail Passenger Transport businesses nationally. In WA regional passenger trains are operated by TransWA and the Indian Pacific with the Transperth Network servicing the metropolitan area

Employment



24,942

employees work in the Rail Passenger Transport industry.

*Source: LDSC Industry Profile, Rail Passenger 2021

